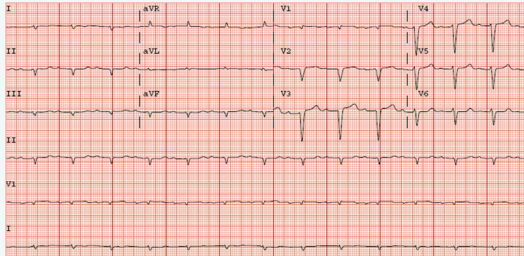


CARDIAC ALERT

The EKG in Cardiac Amyloidosis



Low voltages

For cardiac amyloidosis issues, contraindications exist for calcium channel blockers, Digoxin, ACE inhibitors and beta blockers.

Cautious application and careful monitoring are imperative with the presentation of each patient and their specific cardiac condition and only under certain circumstances.



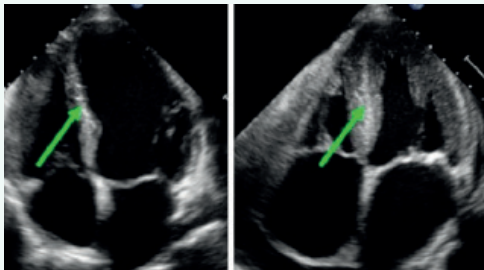
Increased ventricular mass

A combination of increased **ventricular mass** and **low voltages** is very specific for amyloid.

ARCI.ORG
ARC@ARCI.ORG

CARDIAC ALERT

The ECHO in Cardiac Amyloidosis



Normal patient

Patient with amyloid deposits in heart

Increased ventricular mass

Amyloid fibrils make the heart's walls appear thicker when they are deposited in the heart. Notice how much thicker the wall is in the patient with amyloidosis compared with a normal heart in these echocardiogram images.

EKG and cardiac echocardiogram images courtesy of Ron Witteles, MD, Stanford Amyloid Center



Low voltages

A combination of increased **ventricular mass** and **low voltages** is very specific for amyloid.

ARCI.ORG
ARC@ARCI.ORG